



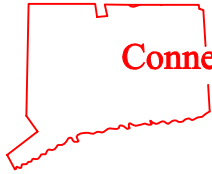
Connecticut Precast Corp.

Manufacturers of Concrete Products

555 FAN HILL ROAD • MONROE, CONN. 06468

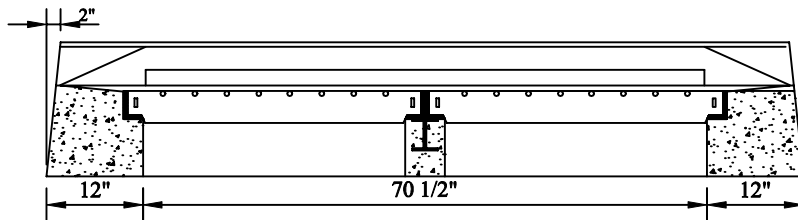
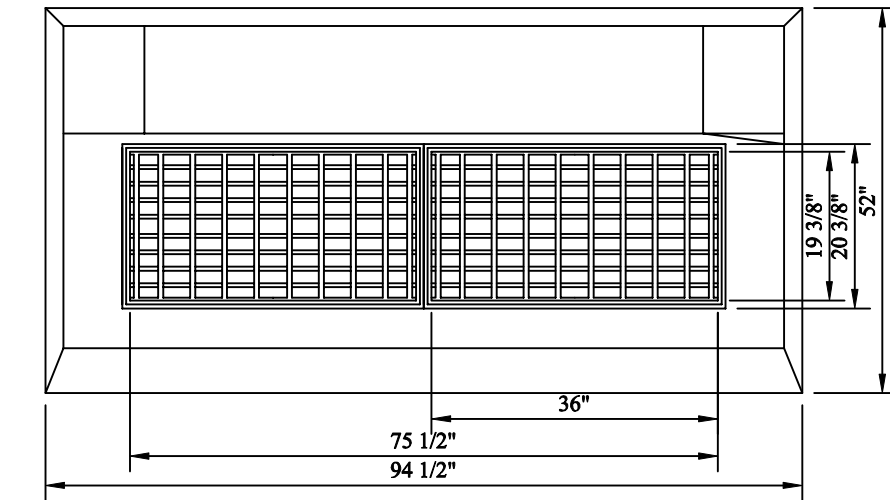
Phone (203) 268-8688 • Fax (203) 452-1007

*Precast Concrete Catch Basins
CTDOT Double Type 2*

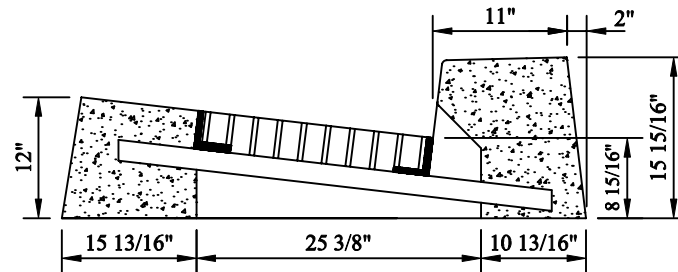


Catch Basins

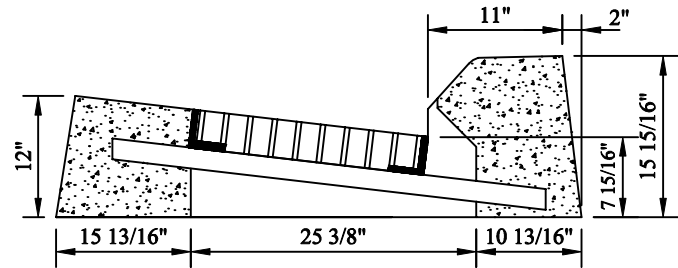
Connecticut State Highway Department
Standard Double Type 2 Curb Top



FRONT VIEW



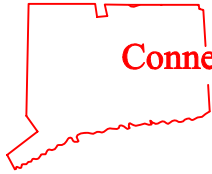
Plain Curb Type



Bituminious Curb Type

NOTES:

1. Minimum Concrete Compressive Strength: 5,000 PSI @ 28 Days.
2. Design Loading: AASHTO HS-20.
3. Conforms to CTDOT standard specifications.
4. Steel reinforced with #4 bars.
5. Approximate weight: 3800 LBS.



Connecticut Precast Corp.

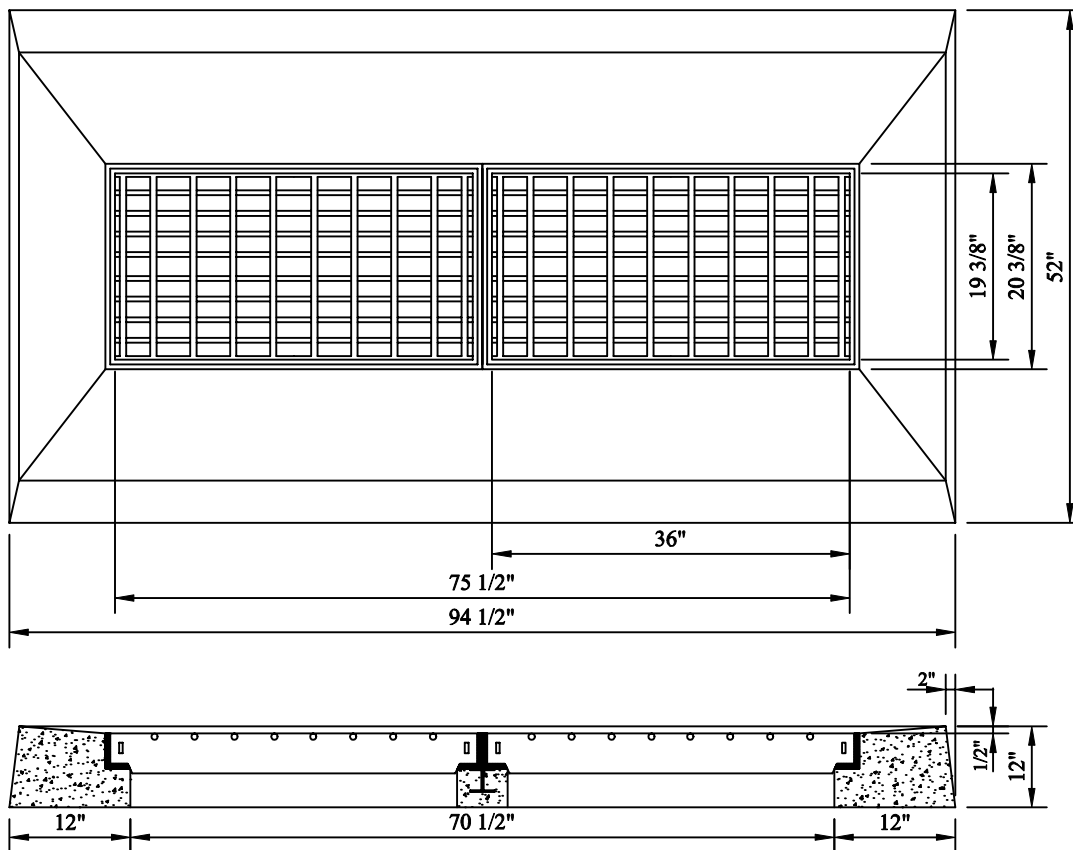
555 Fan Hill Road, Monroe, CT 06468

Telephone (203) 268-8688

Fax (203) 452-1007

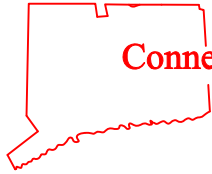
Catch Basins

Connecticut State Highway Department
Standard Double Type 2 "C-L" Top

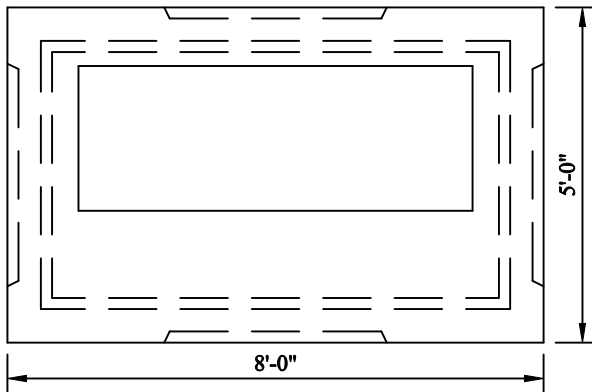


NOTES:

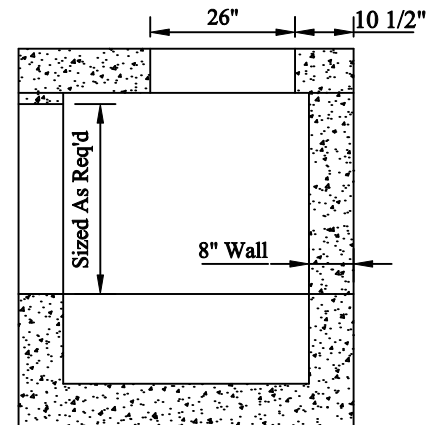
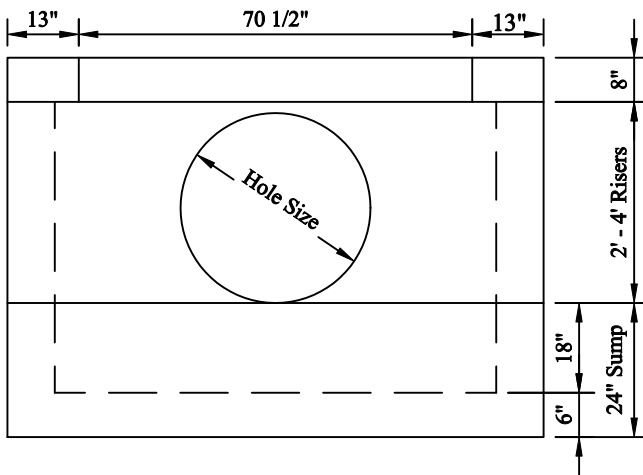
1. Minimum Concrete Compressive Strength: 5,000 PSI @ 28 Days.
2. Design Loading: AASHTO HS-20.
3. Conforms to CTDOT standard specifications.
4. Steel reinforced with #4 bars.
5. Approximate weight: 2800 LBS.



Catch Basins



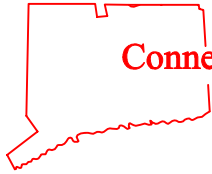
Connecticut State Highway Department
Standard Double Type 2 - 8" wall



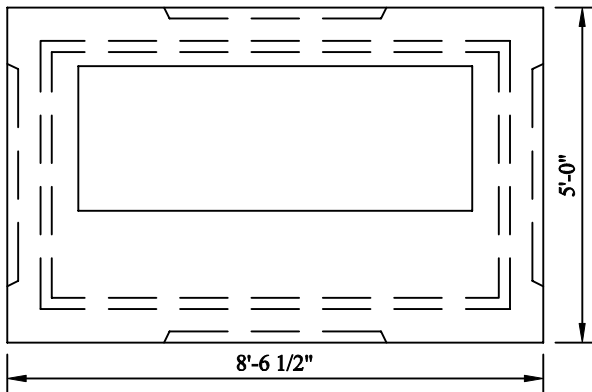
NOTES:

1. Minimum Concrete Compressive Strength: 4,000 PSI @ 28 Days.
2. Design Loading: AASHTO HS-20.
3. Materials meet or exceed ASTM C478 and CTDOT Specifications.
4. Steel reinforced as required.
5. Approximate weights:

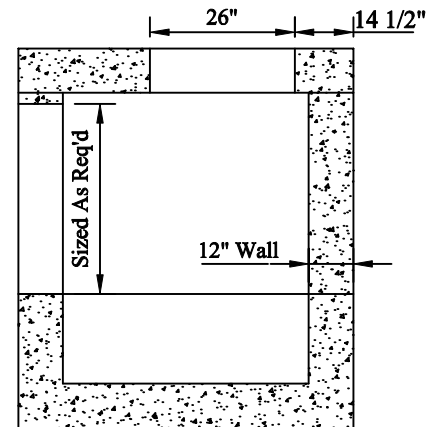
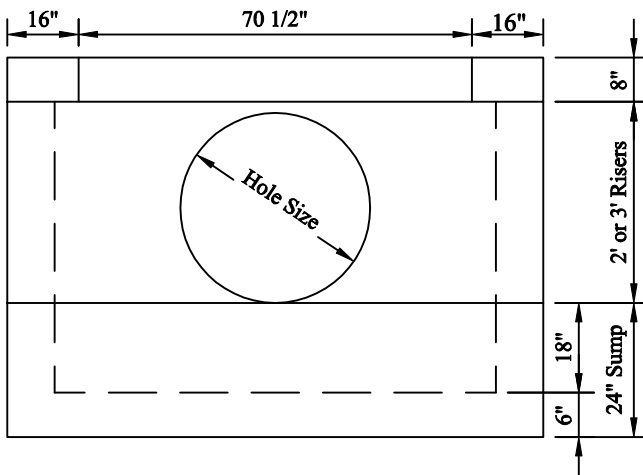
Slab top corbel.....2,100 lbs.
 Riser/v.f.2,140 lbs.
 18" sump.....5,750 lbs.



Catch Basins



Connecticut State Highway Department
Standard Double Type 2 - 12" wall



NOTES:

1. Minimum Concrete Compressive Strength: 4,000 PSI @ 28 Days.
2. Design Loading: AASHTO HS-20.
3. Materials meet or exceed ASTM C478 and CTDOT Specifications.
4. Steel reinforced with 4x4x4 mesh.
5. Approximate weights:

| | |
|----------------------|-------------|
| Slab top corbel..... | 3,000 lbs. |
| 2' riser..... | 7,000 lbs. |
| 3' riser..... | 10,600 lbs. |
| 18" sump..... | 8,800 lbs. |